

Mercedes-Benz EQA250 電動車用車貼士 using tips



多謝您選擇租用EQA250電動車！

對於平常較少駕駛電動車的您，希望以下用車貼士為您在租用期間更加寫意，享受駕駛樂趣。
Thanks for renting EQA250. Here are some tips for a pleasant journey during your rental period.

冇引擎聲？着咗車未？

No engine sound? Has it been started yet?

因電動車不設引擎，因此按下「START/STOP」掣後，**不會有機械啟動聲音**，但車輛已處於可行走狀態，錶板顯示 **READY**。
As there is no engine inside, **NO mechanical sound** will be heard even you have started the car by pressing "START/STOP". **READY** will be shown on the dashboard to indicate the car is ready to go.



波棍在軚盤後方右邊

Shift level is on the right behind the steering wheel.

與平治品牌其他車款一樣，波棍設在**軚盤後方右邊**。

推上是R(後波)、推下是D(一般駕駛)，
按下波棍末端按鈕是P(停車或泊車用)。

Same as other cars of Mercedes Benz. The lever is **behind the steering wheel**. Push upwards for "R", push downwards for "D", and press the button at the end of the lever for "P".



軚盤後方+- 波撥片用途

Purpose of the paddle shifters

撥片**不是用作「轉波」**，而是切換行車動力回收系統模式。

撥片可順序由**D-->D->D>D+**之間切換；
按住右邊的「+」撥片多於1秒更可選擇**D auto**模式。

The paddle shifters are **NOT for shifting between gears**.

They are used to change the recuperation modes.

From**D-->D->D>D+**. Press and hold "+" for **D auto**.



鬆油門 = 迫力？

Release the accelerator pedal = Braking?

電動車設有動力回收系統，把駕駛途中鬆開油門讓車輛滑行時的動能回收，藉以延長續航距離。**視乎動能回收模式不同，有點像汽油車「拖波」效果的煞車感**，會讓車輛速度下降，因此感覺像踩下「迫力」煞車。

D-- 是回收系統**全開**，煞車感強烈尤如重腳踩「迫力」；

D+ 是回收系統**全關**，與汽油車相似**沒有任何煞車感**。

D auto 模式下，汽車會因應前方雷達偵測而自動調節。

Recuperation modes are system which recycle the kinetic energy while the wheels are in motion after you released the accelerator pedal to extend the drivable range. **The stronger the mode it recycles, the stronger "brake" or "drag" you could feel.**

D-- is the full power (similar to a hard braking),

D+ is totally off (no braking or dragging at all).

D auto is adjusted by the car automatically according to the front radar.



Mercedes-Benz EQA250 電動車用車貼士 using tips



多謝您選擇租用EQA250電動車！

對於平常較少駕駛電動車的您，希望以下用車貼士為您在租用期間更加寫意，享受駕駛樂趣。
Thanks for renting EQA250. Here are some tips for a pleasant journey during your rental period.

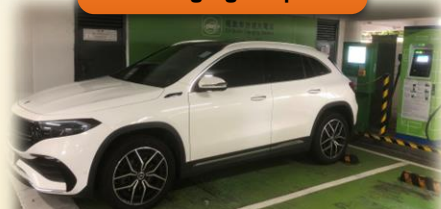
何時需要充電？

When should I recharge the car?

由於現時香港充電設施稱不是非常足夠，建議當電量低於一半時就要計劃前往充電設施的行程。因並非每一個充電設施都可用，又或需要排隊等。建議可下載**Kilowatt**等手機程式尋找附近充電設施。
As recharging facilities in HK is still insufficient, and not all facilities are suitable and maybe you have to wait, we recommend you should start to plan your journey to a nearby recharging facility if the remaining **power level dropped below 50%**.
Download app like “**Kilowatt**” to find nearby recharging facilities.

充電步驟

Charging steps



必須關掉車輛才可打開充電插座蓋掩

The charging cap could be opened only after the car has been **shut down**.

充電頭點樣分？

How to distinguish the plugs?

EQA250的充電頭支援歐規的**CCS2及Type 2**插頭。

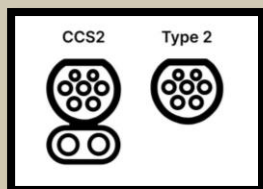
分別在於CCS2支援DC快充
Type 2為AC中速/快速充電。
CCS2要充滿80%電量的話大概1小時內可完成；
Type 2要充電80%電量的話有可能需要2至5小時。

EQA250 supports IEC **CCS2 & Type 2** plugs.

CCS2 supports DC (Quick Charge);

Type 2 supports AC (Medium-speed/Fast charge).

To **charge up to 80%**, **CCS2** requires about **1 hour**, whereas **Type 2** requires **2 – 5 hours**.



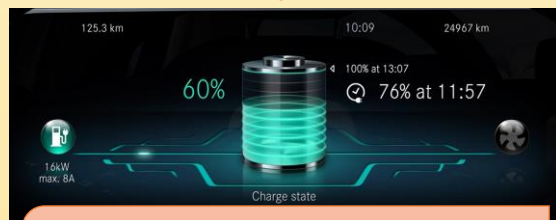
打開蓋掩
Open the cap



AC中速/快速
For AC charging



DC快速
For DC charging



開始充電後，錶板將會顯示電量

Power level will shown on the dashboard after started the charging process.

充電禮儀

Social etiquette for using charging facility

- ✓ **主動留下電話號碼**，等有需要的下一位使用者可聯絡
- ✓ 不要隨便使用他人的插頭及轉換器
- ✓ 充電後將電槍放回原來位置
- ✓ 不要讓朋友車插隊充電 (即讓位俾朋友)
- ✓ **充滿80%電量就可以離開**，繼續充電效率低而且會耗損電池
- ✓ Always **leave your phone number** so that next user could find you.
- ✓ Don't use others' charger and adapters without permission.
- ✓ Return the plug to the position after charging has been completed.
- ✓ Don't let your friends to jump the queue.
- ✓ **Stop charging when charged up to 80%**. No need to charge up to 100% as it reduces the efficiency of the battery.



拔出充電槍前必須按掣解鎖

Press the button to **UNLOCK** before unplugging the charging cable.

平治EQ專用充電站位置

www.mercedesbenzhk.com/eq/zh_HK/